

**Westfield Township Plan Update Committee  
Public Presentation Minutes: 11 June 2009**

Mr. Majewski conducted a PowerPoint presentation at Township Hall titled "Background Data and Status Report."

18 persons attended the presentation.

There was discussion about the value of the summary information all in one place. There were questions and discussion about the future of the Westfield Terrace Subdivision and about traffic and signals in the area of the schools campus.

A copy is attached.

## Outline for Updated Plan

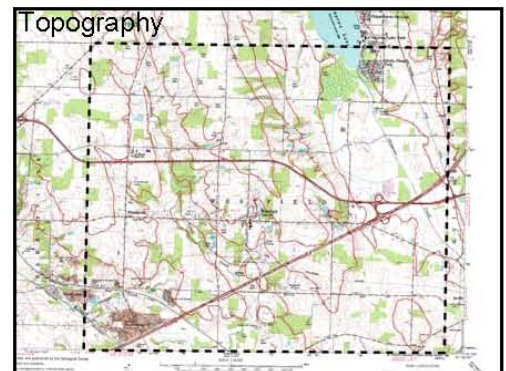
- Background Data & Analyses
- Goals & Objectives
- The Township Plan
- Implementation

## Resident Survey

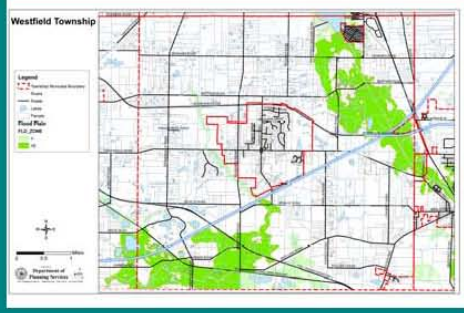
- Survey status
- Topics:
  - Rating public services and facilities
  - Water supply
  - Rural atmosphere
  - Land use issues
  - Open-ended comments

## Background data

- Natural Features (topography, watercourses, floodplains, wetlands)
- Population
- Housing
- Transportation
- Utilities
- Land Use (agriculture, housing, business)
- Current zoning
- Surrounding communities



## Floodplains

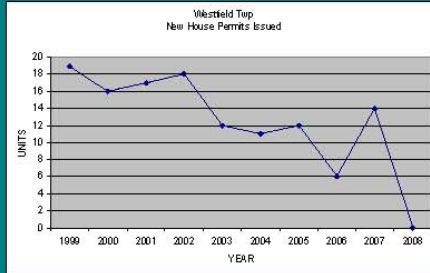


## Population

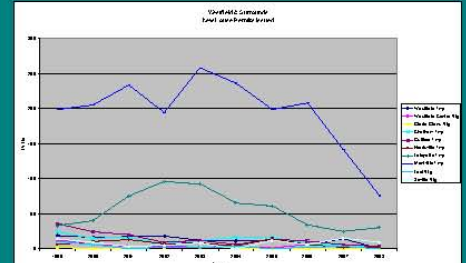
### 2000 US Census reported:

- |                             |       |
|-----------------------------|-------|
| • Total Township            | 4,172 |
| • Westfield Center          | 1,054 |
| • Gloria Glens              | 538   |
| • Unincorporated Township = | 2,580 |
- We estimate that the 106 new housing units built since then have added about 300 persons.
  - Estimated current population is 2,880

## Housing



## Housing

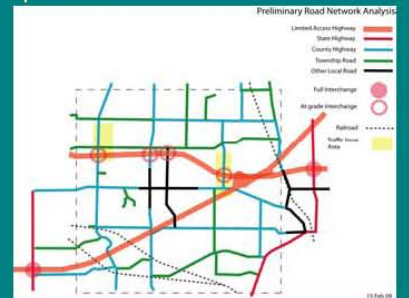


## Population & Housing Projections

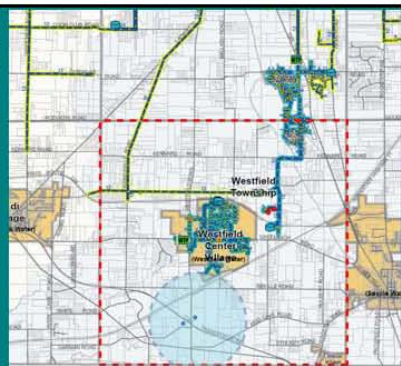
### Considerations:

- Current economic conditions
- One platted, construction-ready subdivision
- Limited access to public utilities
- Montville and Lafayette trends
- Attraction of planned new school facilities

## Transportation

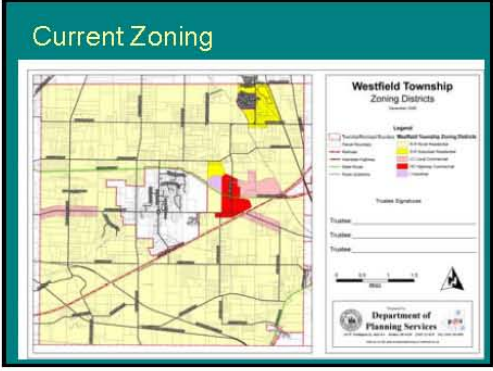
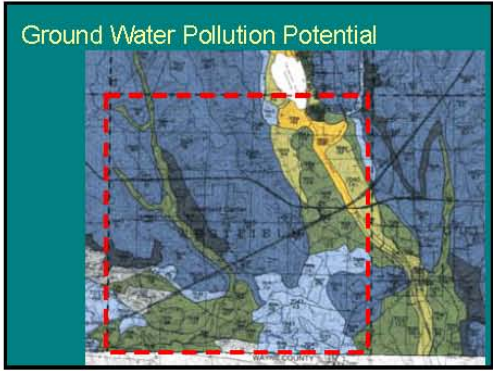
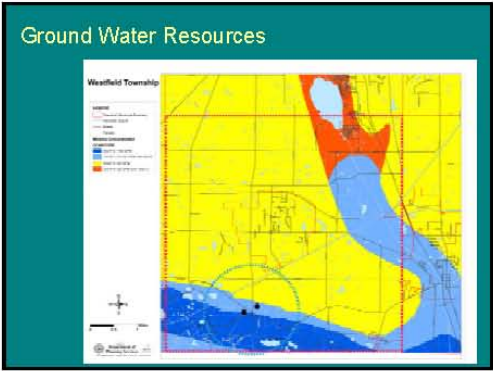
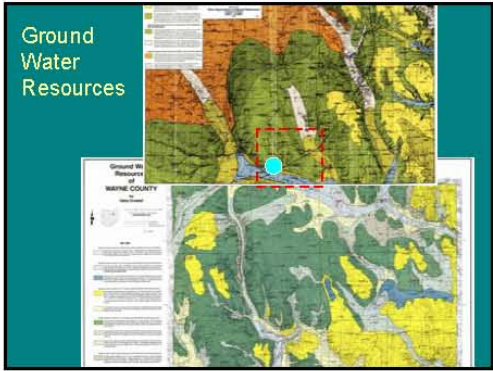


## Public Water



## Watersheds







## Goals & Objectives

We are updating these goals (& objectives) from 1996 Plan:

- "Preserve the rural, small-town atmosphere of Westfield Township."
- "Maintain a level of community facilities and services adequate to meet the needs of the population."
- "Guide the location and timing of new development on the basis of the natural capabilities and limitations of the land."

## Questions and comments?

- What are your priorities for the Township Plan Update?
- What issues would you like us to be thinking about in this Update?

Thank you  
for your time and participation.

Please watch for  
announcement of  
the next public presentation.

Westfield Township  
Development Plan Update Project

## BACKGROUND DATA and STATUS REPORT

Public Presentation  
June 11, 2009

### Purpose of this presentation

- Present background information considered to date
- Report on project status
- Public questions and comments

### What is the Development Plan?

- Periodically updated guide to preserving and maintaining the township
- Focus on land use and zoning
- A guide to zoning decisions
- Westfield Plans were written in 1978, 1996, and reviewed in 2003

### Why is the Development Plan being updated?

- Issues and opportunities continue to change in and around the Township

### Plan Update Process



- Committee of 28 residents
- Guided by community planning professional
- Working meetings held since February

### Plan Update Process

- Data collection and analyses
- Goals and objectives
- Public presentation
- Draft Plan
- Public presentation
- Final Plan